

Created for dc dc

RANGE ROVER

RANGE ROVER

Range Rover SV 4,4 litre V8 615PS (452kW) Twin Turbocharged Petrol (Automatic) All Wheel Drive





EXTERIOR



EXTERIOR FEATURES

COLOURS	Ligurian Black - Satin finish	£9,990
WHEELS	23" forged, Style 1077, Satin Dark Grey with Satin Black contrast and Narvik Black Gloss inserts	£4,000
BRAKES	Red brake calipers	£305
SPARE WHEEL	23" full size spare wheel	£1,060
ROOF COLOUR	Body-coloured roof	£0
ROOF TYPE	Sliding panoramic roof	£0
THEMES	SV Intrepid Exterior	£0
VISUAL PACKS	SV Intrepid Exterior Accents	£1,900
HEADLIGHTS	Digital LED headlights with signature DRL and Image Projection	£0
GLASS	Privacy glass	£0
GLASS	Laminated front and rear side glass	£0
		TOTAL £17,255



COLOURS



WHEELS



ROOF COLOUR



ROOF TYPE



THEMES



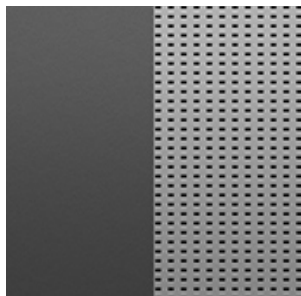
VISUAL PACKS

INTERIOR



INTERIOR FEATURES

SEAT CONFIGURATION	5-seat Executive Class Comfort Plus rear seats only	£0
TRIM	SV Intrepid Light Cloud front and Cinder Grey rear Ultrafabrics™ seats with Cinder Grey interior	£3,000
SEAT FUNCTIONALITY	24-way heated and cooled, hot stone massage electric front seats with Executive Class Comfort Plus rear seats	£0
INTERIOR UPGRADES	Premium Non-leather Upgrade	£0
CONTROLS	Satin Black ceramic controls	£0
REAR SEAT ENTERTAINMENT	13.1" Rear Seat Entertainment	£0
HEADLINING	Cinder Grey Ultrafabrics™ headlining	£0
FINISHERS	Natural Black Birch veneer	£0
CARPET COLOUR	Cinder Grey carpet	£0
CARPET TYPE	SV Bespoke carpet mats	£215
STEERING WHEEL	Premium non-leather steering wheel	£0
HEATED	Heated steering wheel	£0
AUDIO	Meridian™ Signature Sound System	£0
		TOTAL £3,215



TRIM



HEADLINING



FINISHERS



CARPET COLOUR



CARPET TYPE



STEERING WHEEL

OPTIONS

INTERIOR FEATURES

£400

Tailgate Event Suite

Enhance Range Rover's trademark split tailgate with Tailgate Event Suite, featuring the Versatile loadspace floor, tailgate speakers and lighting. It enables the driver & passenger to relax and enjoy the surroundings with social seating.

£400

TOTAL £400

ACCESSORIES

EXTERIOR ACCESSORIES**£3,993**

Deployable Side Step Kit, LWB, 5 Seat

These smart, practical deployable side steps aid entry into and exit from the vehicle, as well as assisting access to the roof. Each side step features a brushed stainless steel finish, with laser etched Range Rover branding embossed into the black moulded rubber treadplate mat, and a black edged trim finish. Neatly stowed under the sills, the side steps automatically deploy as soon as the door is opened, or when activated by the key fob. They stow automatically when the door is closed. The deployable side steps are sensitive to obstructions and will not deploy in off-road or low range settings. Automatic mode can be overridden to allow access to the roof when the doors are closed.

£3,993

TOTAL £3,993

Prices are subject to change; includes Retailer installation charges and taxes. Please consult your local authorised Retailer for details.

STANDARD FEATURES

GLASS

Solar attenuating windscreen

Heated windscreen

TOWING

No Towing

PACKS

Non-Smoker's Pack

EXTERIOR FEATURES

SV exclusive metal plated elements

SV exclusive front bumper and grille design

New white ceramic badge with black SV roundel

SV etched roundel on side gill inserts

SV exterior badge

SV branded puddle lamps

Flush deployable door handles

Heated, electric, power fold door mirrors with approach lights and auto-dimming

Heated washer jets

Rain sensing windscreen wipers

Winter wiper park position

Animated Directional Indicators

Front fog lights

Automatic headlights

Automatic Headlight Levelling

Headlight power wash

LED tail lights

Electric windows with one-touch open/close and anti-trap

EXTERIOR FEATURES

Heated rear window	Centre high-mounted stop light	Rear fog light(s)
Acoustic laminated windscreen	*SV Engine Cover	

WHEELS AND TYRES

Tyre Pressure Monitoring System (TPMS)	Locking wheel nuts
--	--------------------

SEATING AND INTERIOR TRIM

Illuminated seat belt buckles	Heated steering wheel	Multi-function steering wheel
Electrically adjustable steering column		

INTERIOR FEATURES

Auto-folding loadspace cover	SV exclusive seat foams and sculpting	SV exclusive seat pattern embroidery / perforation
SV exclusive seat and interior finishers	Extended Windsor leather wrapping throughout the cabin	Illuminated aluminium treadplates with illuminated SV script
Cabin lighting	Bright metal pedals	Four-zone Climate Control
Front centre console refrigerator compartment	Air Quality Sensor	Cabin Air Purification Pro
Lockable glovebox with upper stowage	Easy Boot Loading	Twin-blade sunvisors with illuminated vanity mirrors

INTERIOR FEATURES

Driver and passenger front seat armrests	Rear centre armrest	Front and rear grab handles
Front and rear cupholders	Luggage tie-downs in loadspace	Hook(s) in loadspace
Electric rear side window sunblinds	Loadspace light	

INFOTAINMENT

13.1" Touchscreen	13.1" Rear Seat Entertainment	Pivi Pro
Digital Audio Broadcast (DAB) radio	Wireless Apple CarPlay®	Wireless Android Auto™
Interactive Driver Display	Head-up Display	Online Pack with Data Plan
Wi-Fi Enabled with Data Plan	Wireless device charging	USB socket(s)
12V power socket(s)	Domestic plug socket	Voice control
All Terrain Info Centre	Remote	Bluetooth® connectivity
Bluetooth® streaming	SV start-up graphics in IP screen	SV exclusive speaker grille design

CONVENIENCE

ClearSight interior rear view mirror	Powered gesture tailgate	Keyless Entry
Soft door close	Garage Door Opener (HomeLink®)	SV exclusive key fob with White and Black 'SV' roundel

DRIVER ASSISTANCE

Emergency Braking	Blind Spot Assist	3D Surround Camera
Adaptive Cruise Control with Steering Assist	Driver Condition Response	Lane Keep Assist
Park Assist	Front and Rear Parking Aid	Rear Collision Monitor
Rear Traffic Monitor	Traffic Sign Recognition and Adaptive Speed Limiter	Occupant Protection Assist

CAPABILITY AND DYNAMICS

All Wheel Drive (AWD)	All Wheel Steering	Electronic Air Suspension with Dynamic Response Pro
Electronic Active Differential with Torque Vectoring by Braking	8-speed Automatic Transmission	Terrain Response 2
All Terrain Progress Control (ATPC)	Configurable Programs	Automatic Access Height
Adaptive Dynamics	Hill Descent Control (HDC)	Hill Launch Assist
Dynamic Stability Control (DSC)	Electronic Traction Control (ETC)	Low traction launch
Roll Stability Control (RSC)	Cornering Brake Control (CBC)	Electric Power Assisted Steering (EPAS)
Gearshift paddles	Brake Hold	Electric Parking Brake (EPB)
Emergency Brake Assist	Anti-lock Braking System (ABS)	Electronic Brake-force Distribution (EBD)
Twin-speed transfer box (high/low range)	Adaptive Off-Road Cruise Control	

TOWING

Trailer Stability Assist (TSA)

Electrical towing preparation

Front and rear recovery eyes

SAFETY AND SECURITY

Secure Tracker Pro (12-month subscription)

Intrusion sensor

Side repeater indicators in mirror

Customer Configurable Autolock

Customer Configurable Single Point Entry

Power operated child locks

Rear ISOFIX

Front airbags, with passenger seat occupant detector

Front side airbags

TECHNICAL SPECIFICATIONS

PERFORMANCE

Maximum speed mph (km/h)	162 (261)
Acceleration (secs) 0-60mph (0-100 km/h)	4.4 (4.6)

POWERTRAIN

Capacity (cc)	4,395
Maximum power (HP/rpm)	615 / 5,855 - 7,000
Maximum torque (Nm/rpm)	750 / 1,800 - 5,400
Transmission	Automatic
Tank capacity (litres approx.)	90

WEIGHTS

Unladen weight (EU) (kg)	2,785 Δ
Unladen weight (DIN) (kg)	2,710 \blacktriangle
Gross Vehicle Weight (GVW) (kg)	3,400

TOWING

Unbraked trailer (kg)	750
Maximum towing (kg)	3,500
Maximum coupling point (nose weight) (kg)	150

TOWING

Maximum vehicle and trailer combination (GTW) (kg)	6,900
--	-------

ROOF CARRYING

Maximum roof load (including cross bars) (kg)	100
---	-----

DIMENSIONS

Height (mm)	1,870
Length (mm)	5,252
Width with mirrors folded (mm)	2,047
Width with mirrors out (mm)	2,209
Front wheel track (mm)	1,700.3
Rear wheel track (mm)	1,702.3
Wheelbase (mm)	3,197

HEADROOM

Maximum front/rear headroom with panoramic roof (mm)	999 / 978.3 / (third row)
--	---------------------------

LEGROOM

Maximum front/rear legroom (mm)	1,014 / 1,220 / (third row)
---------------------------------	-----------------------------

LOADSPACE CAPACITY

Height (mm)	845.8
Width (mm)	1,444
Width between arches (mm)	1,057.3
Length behind first row (mm)	2,165.0
Maximum loadspace volume behind first row - Dry (litres)	2,176◇
Maximum loadspace volume behind first row - Wet (litres)	2,727.6◆
Length behind second row (mm)	1,093.0
Maximum loadspace volume behind second row - Dry (litres)	818◇
Maximum loadspace volume behind second row - Wet (litres)	1,050.0◆
Length behind third row (mm)	
Maximum loadspace volume behind third row - Dry (litres)	◇
Maximum loadspace volume behind third row - Wet (litres)	◆

GROUND CLEARANCE - STANDARD

Ride height (mm)	219
Approach Angle	25.1°
Departure Angle	24.5°
Ramp Angle	20.1°

GROUND CLEARANCE - OFF ROAD

Ride height (mm)	292
Approach Angle	34.7°**
Departure Angle	29.0°**
Ramp Angle	25.9°**

WADING DEPTH

Maximum wading depth (mm)	900
---------------------------	-----

TURNING CIRCLE

Kerb-to-kerb (m)	11.54
Wall-to-wall (m)	11.96
Turns lock-to-lock (no. of turns)	2.78

WLTP FUEL ECONOMY

WLTP CO ₂ Emissions (from) (g/km)	268
--	-----

WLTP Fuel Consumption (up to) (mpg)	23.9
-------------------------------------	------


Pricing

Base Cost	£189,200
Configured Options	£24,863
VEHICLE FIRST REGISTRATION FEE	£55
Vehicle Excise Duty	£2,605
Final Price	£216,723*


Your Selected Land Rover Retailer

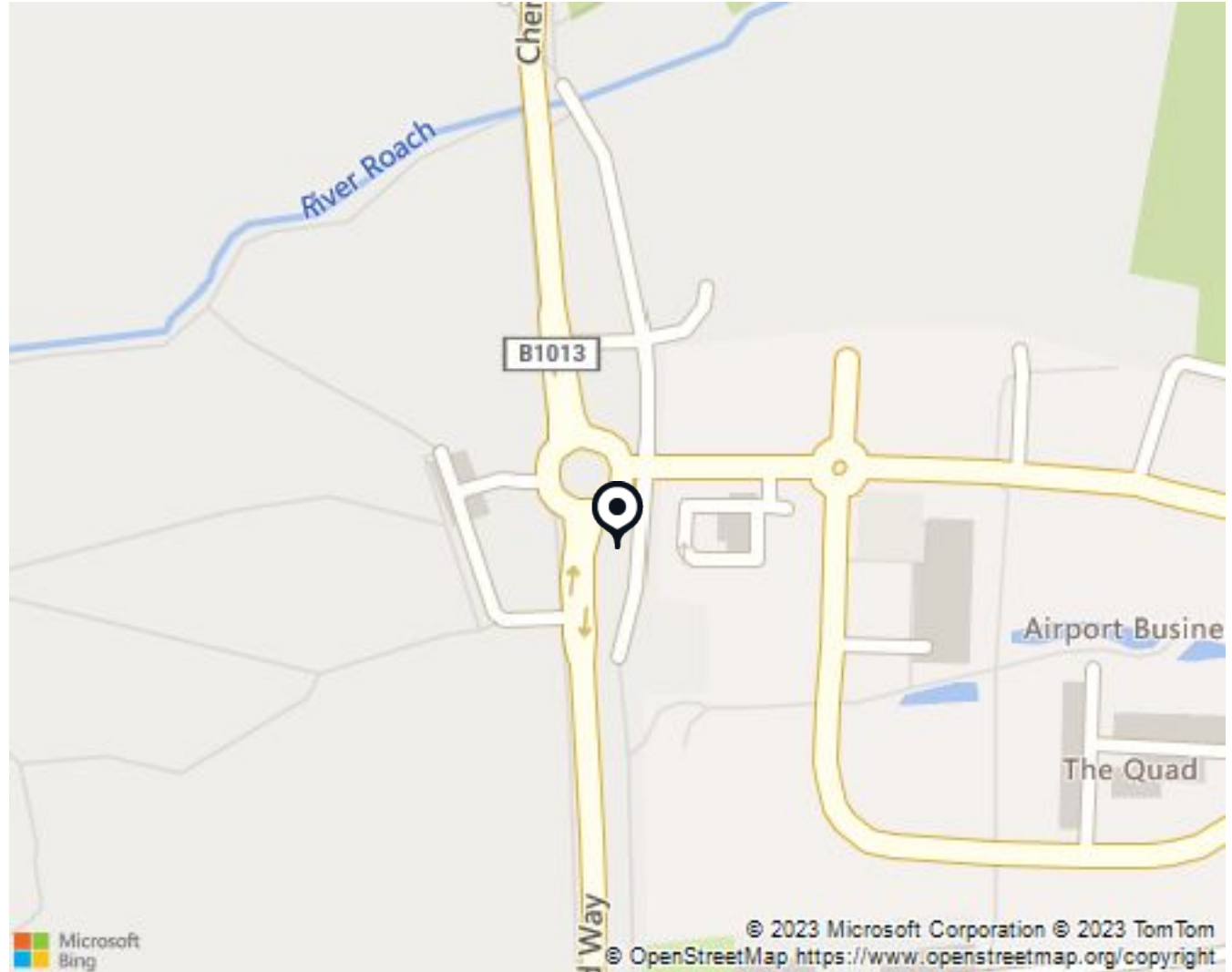
Based on the details you provided earlier here is your selected Land Rover retailer;

GROUP 1 LAND ROVER, SOUTHEND

 01702 510700

 salesenquiriesouthendlandrover@beadles.co.uk

 Cherry Orchard Way, Rochford, SS4 1GP



††VIEW WLTP FIGURES

††The figures provided are as a result of official manufacturer's tests in accordance with EU legislation with a fully charged battery. For comparison purposes only. Real world figures may differ. CO₂, fuel economy, energy consumption and range figures may vary according to factors such as driving styles, environmental conditions, load, wheel fitment, accessories fitted, actual route and battery condition. Range figures are based upon production vehicle over a standardised route.

△ Includes a 75kg driver, full fluids and 90% fuel.

▲ Includes full fluids and 90% fuel.

◇ Dry: Volume as measured with VDA-compliant solid blocks (200mm x 50mm x 100mm).

◆ Wet: Volume as measured by simulating the loadspace filled with liquid.

‡ With Dynamic Launch engaged.

**With tow eye cover removed.

- [PRIVACY POLICY](#)
- [TERMS AND CONDITIONS](#)
- [CONTACT US](#)
- [INTERNATIONAL STANDARDS](#)
- [MARKET SELECTOR](#)
-

© Jaguar Land Rover Limited 2023: Registered office: Abbey Road, Whitley, Coventry CV3 4LF. Registered in England No: 1672070

Important note on imagery & specification

The global shortage of semiconductors is currently affecting vehicle build specifications, option availability, and build timings. This is a very dynamic situation, and as a result imagery used within the website at present may not fully reflect current specifications for features, options, trim and colour schemes.

Please consult your Retailer who will be able to confirm any current restrictions with you in order to allow an informed choice.

Jaguar Land Rover Limited is constantly seeking ways to improve the specification, design and production of its vehicles, parts and accessories and alterations take place continually, and we reserve the right to change without notice. Some features may vary between optional and standard for different model years.

**Estimated lead time for deliveries. The information is our best advice at the time of publishing and is subject to change. Please contact your Retailer for the latest information.

RANGE ROVER

<http://www.landrover.co.uk>